



WRJ Pacific District Convention
Portland, Oregon
October 25-28, 2012

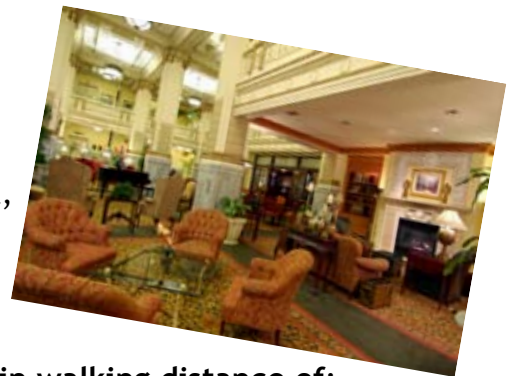
Budget now—journey next year!

As you plan your next Sisterhood budget, be sure to include Leadership Development funds to send delegates to Portland as *The Journey Continues*.

Planning is underway to make this a practical-solution-oriented convention—and a very enjoyable visit to Portland, the Rose City.

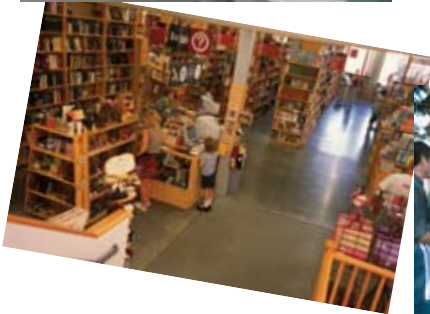


The MAX light rail train takes you from the airport's baggage-claim area to the heart of downtown and the beautiful Embassy Suites Hotel, the site of the convention.



This central location puts you within walking distance of:

- Great restaurants
- Lots of places to shop (No sales tax!)
- A weekend artisans market
- Powell's City of Books—more than a city block of new and used books
- VooDoo Donuts—the craziest snack food in town
- Lan Su Chinese Garden ... and much more!



Plan to spend some extra time in Portland and make it a family vacation.

For your budget planning:

Convention registration: \$295 per person (est.); Hotel: \$159+tax per room (includes full buffet breakfast)

Photo credits: Travel Portland, Tim Jewett, Barbara McIntyre, Bruce Forster, Larry Geddis, Polara Studios, Basil Childers, David Falconer